

Eenterprise

Ever thought of starting a business?

Enterprise courses starting across the Isle of Wight

How Will the E-enterprise Programme Help Me?

Over 40% of UK adults (18-65) stated they would like to run a business or be self-employed yet only 5% do, citing the lack of skills and confidence as the major barrier. Coralesce Ltd will be running a 40 hour non-accredited course to help you get started and take advantage of technologies and new ways to run a business.

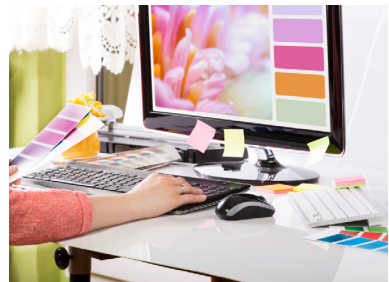


The course will involve 5 classroom sessions of 3 hours and will include hands-on training and guest speakers who are currently running businesses as well as high quality online learning materials. The course will take 5 weeks.

How Will I Learn?

- Face to Face Meetings
- Online learning resources and activities

The purpose of the meeting sessions is to enable you to check your understanding of the topics covered in the online sessions and also to help you apply your learning to your own business.



The Course Will Cover 5 Units:

- Generating and assessing a business idea
- Assessing your capacity to start and run a business
- Financial considerations
- Understand how to sell a product or service
- Introduction to launching and running an online business



Fees

£20 if total household income is under £23,000 per annum

Learners are expected to have a laptop, tablet or smart phone, access to email and internet to use during the course.

Dates & Times

7th December-11th January 2017

Course is 3 hours(Wednesday 9.30-12.30 for 5 weeks run at:

**Shaw Trust, Mill Court,
Furlongs, Newport
PO30 2AA**



Enrol Now

To enrol contact: info@coralesce.com

01983 741114 /0758 4991219

Coralesce Ltd
Brixton Barn, Main Road,
Brightstone PO30 4DJ

Supported by

